

Laboratory Bulletin

Important News from DCL Medical Laboratories



March 10, 2010

ESwab to be used for bacterial cultures and bacterial and viral DNA testing









ESwab to be used for bacterial cultures and bacterial and viral DNA testing

DCL Medical Laboratories is very pleased to announce that we have validated a new type of specimen collection swab that will replace the majority of the swabs that clients currently use for specimen collection. The ESwab Collection and Transport System will be used for bacterial cultures and bacterial and viral molecular (DNA) testing.

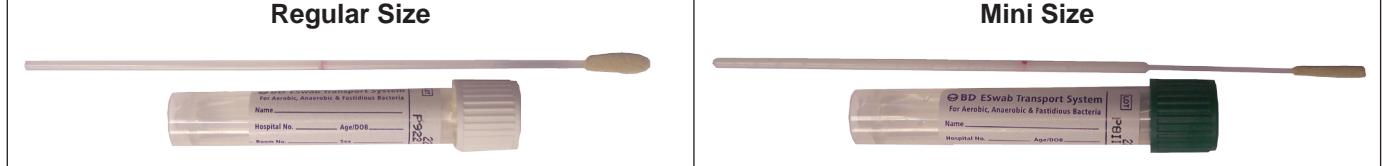
The new swab not only makes specimen collection simpler for clients by reducing the overall number of swabs used, but is also a better collection device than the traditional wound cotton swab. The ESwab is a swab yields a more adequate specimen, DCL is able to use the same swab for both molecular testing and cultures.

The charts on the following pages show the testing that will now be performed using the new swab, as well as details regarding specimen collection and stability. We ask that you please continue to use your current stock of swabs until it has been depleted. DCL may complete your next supply order with the new swab.

If you would like additional copies of the poster or have any questions regarding the new swab, please contact DCL Client Services at (317) 874-1334 or toll free at (866) 874-1334.

The ESwab Replaces:		
<p>Copan Transport Swab</p> 	<p>Black Top Anaerobic Port-a-Cul</p> 	<p>Red Top Double Swab</p> 
<p>M4</p> 	<p>Red-top M4RT</p> 	<p>Green Top Mini-Tip Swab</p> 
The ESwab may be used as an alternative to:		
<p>Genprobe Aptima® Unisex Swab</p> 	<p>5ZÜf a 'JD=== ' 5 a VJYbh' HY a d' HfUbgdcfh' ?]h</p> 	

ESwab Collection & Transport System



The ESwab (Regular) is used for PCR, Bacterial Aerobes, Bacterial Anaerobes and Fastidious Organisms:

The ESwab (Mini) is used for specimen sources that need a smaller swab than the regular-size ESwab:

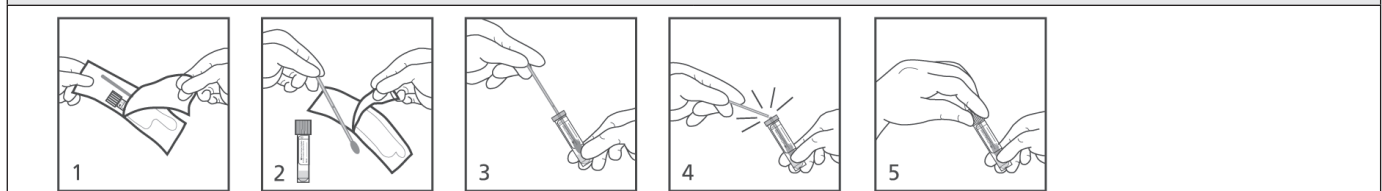
- [4009] Culture GC (Neisseria gonorrhoeae) (Female)
- [5009] Chlamydia Trachomatis DNA (Female)
- [5007] Neisseria Gonorrhoea DNA (Female)
- [4002] Culture Genital
- [4013] Strep, Group A, Antigen Screen with Culture if Negative
- [4014] Culture Hemolytic Strep, Throat
- [4029] Culture Anaerobic (Includes Smear)

- [4015] Culture Eye
- [4009] Culture GC (Neisseria gonorrhoeae) (Male)
- [5009] Chlamydia Trachomatis DNA (Male)
- [5007] Neisseria Gonorrhoea DNA (Male)

Specimen Stability:

1 day at room temperature or refrigerated for Culture GC (Neisseria gonorrhoeae) [4009]
 2 days at room temperature or refrigerated for all other testing

Specimen Collection:



Note: Swab should not be bent prior to sample collection. If ordering more than 3 tests, please collect 2 swabs to ensure adequate specimen volume.

2. Collect the specimen from the patient.
3. Aseptically unscrew and remove the cap from the tube.
4. Insert the swab into the tube and bend the swab shaft at the breakpoint indicated by the colored line marked on the swab shaft against the tube to break the shaft. Discard the broken handle part of the swab shaft into an approved medical waste disposal container.

Note: During specimen collection when handling the swab applicator, the operator must not touch the area as this will lead to contamination of the applicator shaft and the culture thus invalidating the test results.